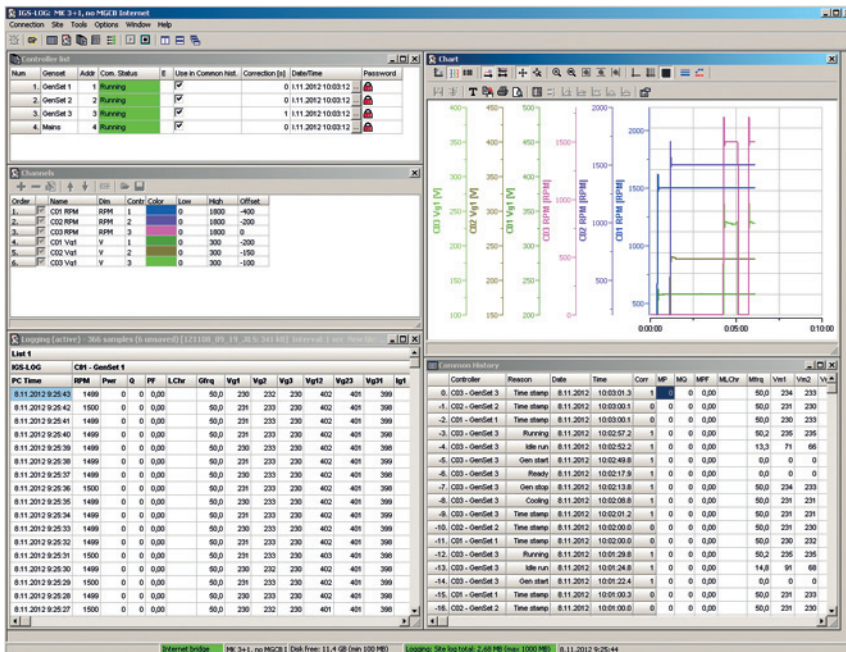


# IGS-LOG



## GEN-SET MONITORING SOFTWARE



### Description

IGS-LOG is a multiple application continuous monitoring software dedicated to ComAp's IntelliGen, IntelliSys and IntelliMains controllers.

It ensures storage of measured values and history data from all controllers on the site to selected PC directories during direct, modem or Internet connection.

IGS-LOG provides easy and convenient way to investigate actual and historic data from your controllers and thus supplies complete site information.

### Features

- Connection to single/multiple gen-sets
- Win98/WinNT/Win2000/WinXP/Win7 based software
- Compatible with IntelliGen, IntelliSys and IntelliMains controllers
- Direct, modem or Internet connection
- View of history data in one common window or separately for each controller
- Data stored in XLS or CSV file format
- Adjustable logging period (seconds - hours)
- Autosave of an open file after adjusted time
- Automatic new file creation to separate data files by days, weeks, months, ...
- Compensation of particular controller's RTC offsets
- Common history window aggregates the history of particular controllers on the site → easy to find consequences
- Online selection of controllers included into Common history file
- Automatic logging start after computer restart (e.g. after power supply failure)
- Selected values in the graph

### Benefits

- Synoptic display of measured values from several controllers
- Storage of history data to file
- Possibility to compare stored data from different controllers offline

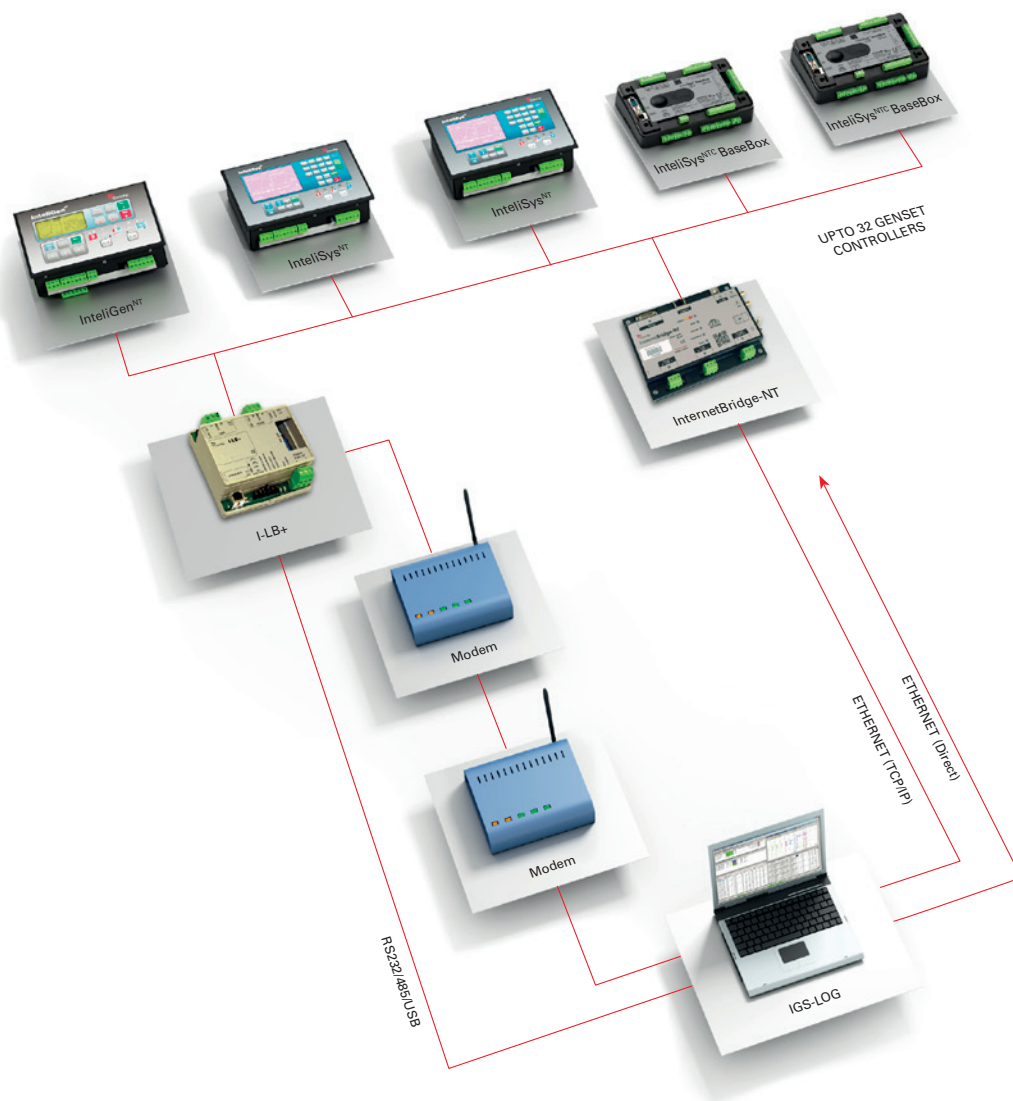


ComAp is a member of AMPS (The Association of Manufacturers of Power generating Systems).



ComAp products meet the highest standards, with every stage of production undertaken in accordance with the ISO certification obtained in 1998.

## IGS-LOG connection



## Communication features

### InternetBridge-NT

- ▶ Ethernet/Internet/ GPRS/UMTS
- ▶ ComAp AirGate technology
- ▶ Connection to controllers via RS232, RS485, CAN
- ▶ ComAp cloud-based system for remote monitoring
- ▶ Supports all cellular packet data systems from GPRS to HSPA (2.5G to 3.75G)

### I-LB+

- ▶ Communication bridge for sites with multiple controllers for local or remote monitoring and control
- ▶ Direct (RS232, RS485), modem, Modbus or USB connection to multiple controllers
- ▶ Communication speed up to 57600 bps (including Modbus mode)
- ▶ Analog/GSM/ISDN/ CDMA modem support

For more information about our products and applications visit

**[www.comap.cz](http://www.comap.cz)**



MANUFACTURER:

**ComAp a.s.**

Czech Republic  
Phone: + 420 246 012 111  
Fax: + 420 266 316 647  
E-mail: [info@comap.cz](mailto:info@comap.cz)  
Internet: [www.comap.cz](http://www.comap.cz)



LOCAL DISTRIBUTOR / PARTNER:



**Customer satisfaction is our mission. We continuously develop our people to be the best to succeed in our mission.**